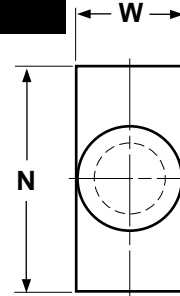
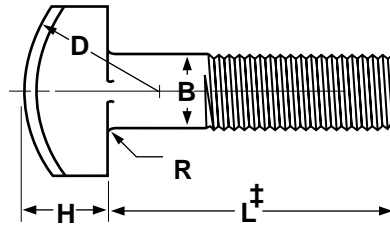


# T-Head Bolts

# Bolts & Cap Screws



‡Length of a T-head bolt is measured from the underhead bearing surface to the extreme end of the bolt.

T-HEAD BOLTS												ANSI/ASME B18.5	
Nominal Size or Basic Bolt Diameter		B		N		W		H		D	R		
		Body Diameter		Head Length		Head Width		Head Height		Head Radius	Fillet Radius		
		Max	Min	Max	Min	Max	Min	Max	Min	Basic	Max		
1/4	0.2500	0.260	0.237	0.500	0.488	0.280	0.245	0.204	0.172	0.438	0.031		
5/16	0.3125	0.324	0.298	0.625	0.609	0.342	0.307	0.267	0.233	0.500	0.031		
3/8	0.3750	0.388	0.360	0.750	0.731	0.405	0.368	0.331	0.295	0.625	0.031		
7/16	0.4375	0.452	0.421	0.875	0.853	0.468	0.431	0.394	0.356	0.875	0.031		
1/2	0.5000	0.515	0.483	1.000	0.975	0.530	0.492	0.458	0.418	0.875	0.031		
5/8	0.6250	0.642	0.605	1.250	1.218	0.675	0.616	0.585	0.541	1.062	0.062		
3/4	0.7500	0.768	0.729	1.500	1.462	0.800	0.741	0.649	0.601	1.250	0.062		
7/8	0.8750	0.895	0.852	1.750	1.706	0.938	0.865	0.776	0.724	1.375	0.062		
1	1.0000	1.022	0.976	2.000	1.950	1.063	0.990	0.903	0.847	1.500	0.062		

Tolerance on Length	Nominal Bolt Size	Nominal Screw Length									
		Up to 1 in., incl.		Over 1 in. to 2 1/2 in., incl.		Over 2 1/2 in. to 4 in., incl.		Over 4 in. to 6 in., incl.		Over 6 in.	
	No. 10 thru 3/8	+0.02	-0.03	+0.02	-0.04	+0.04	-0.06	+0.06	-0.10	+0.10	-0.18
	7/16 and 1/2	+0.02	-0.03	+0.04	-0.05	+0.06	-0.08	+0.08	-0.10	+0.12	-0.18
	9/16 thru 3/4	+0.02	-0.03	+0.06	-0.08	+0.08	-0.10	+0.10	-0.10	+0.14	-0.18
	7/8 and 1	....	....	+0.08	-0.10	+0.10	-0.14	+0.12	-0.16	+0.16	-0.20
1-1/8 thru 1-1/2	....	....	+0.12	-0.12	+0.16	-0.16	+0.18	-0.18	+0.22	-0.22	

Description	A low or medium carbon steel, externally threaded mechanical device 1/4" diameter or larger, with a rectangular head with a rounded top surface and a flat bearing surface.
Applications/ Advantages	Used in the machine tool and water works industries
Material	Bolts shall be made from a carbon steel which conforms to the following chemical composition requirements-- <i>Carbon: 0.55% maximum; Phosphorus: 0.048% maximum; Sulfur: 0.058% maximum</i>
Hardness	Rockwell B70 - 100
Tensile Strength	60,000 psi. minimum
Yield Strength	36,000 psi. minimum
Elongation	18% minimum
Reduction of Area	35% minimum
Plating	See Appendix-A for plating information.