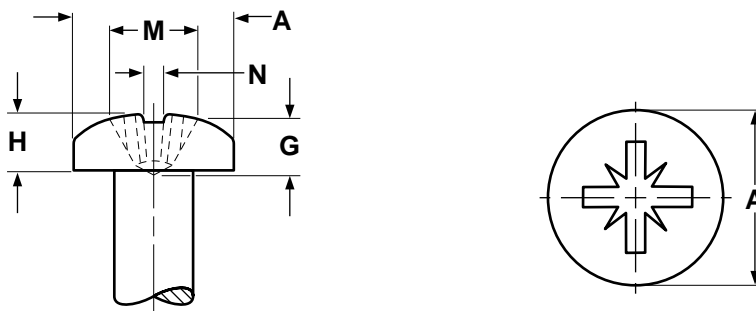


POZIDRIV® (1A) FLAT HEADS FOR MACHINE SCREWS												ASME B18.6.3-1998	
Nominal Size	A		H		M	R	N	Recess Penetration Gaging Depth		F		G	Driver Size
	Head Dimensions				Recess Dimensions			Max		Protrusion Above Gaging Diameter		Gaging Diameter	
	Diameter		Height		Diam.	Depth	Width			Max	Min		
	Max	Min	Max	Min	Ref	Ref	Ref	Max	Min	Max	Min		
2	.162	.144	.051	.040	.096	.055	.029	.053	.037	.029	.017	.124	1
4	.212	.191	.067	.055	.122	.081	.030	.079	.063	.032	.019	.172	1
6	.262	.238	.083	.069	.168	.098	.041	.091	.073	.036	.021	.220	2
8	.312	.285	.100	.084	.182	.112	.041	.107	.089	.039	.023	.267	2
10	.362	.333	.116	.098	.198	.127	.041	.122	.104	.042	.025	.313	2
12	.412	.380	.132	.112	.262	.149	.056	.136	.118	.045	.027	.362	3
1/4	.477	.442	.153	.131	.276	.164	.057	.151	.133	.050	.029	.424	3
5/16	.597	.556	.191	.165	.358	.211	.086	.193	.175	.057	.034	.539	4
3/8	.717	.670	.230	.200	.386	.239	.086	.222	.204	.065	.039	.653	4



POZIDRIV® (TYPE 1A) PAN HEADS FOR MACHINE SCREWS												ASME B18.6.3-1998	
Nominal Size	A		H		M		G		N	Recess Penetration Gaging Depth		Driver Size	
	Head Diameter		Height of Head		Dimensions of Recess					Max			
	Max		Min		Diameter		Depth		Width				
					Max	Min	Max	Min	Min	Max	Min		
2	.167	.155	.062	.053	.104	.091	.064	.048	.028	.053	.037	1	
4	.219	.205	.080	.070	.122	.109	.083	.067	.029	.072	.056	1	
6	.270	.256	.097	.087	.162	.149	.092	.074	.040	.076	.058	2	
8	.322	.306	.115	.105	.177	.164	.108	.090	.041	.092	.074	2	
10	.373	.357	.133	.122	.193	.180	.124	.106	.041	.108	.090	2	
12	.425	.407	.151	.139	.254	.241	.139	.121	.056	.117	.099	3	
1/4	.492	.473	.175	.162	.273	.260	.159	.141	.057	.137	.119	3	

®Pozidriv is a registered trademark of the Phillips Screw Company. Kanebridge's fasteners with a 1A-drive are not manufactured by or connected with the producers of Pozidriv® fasteners.