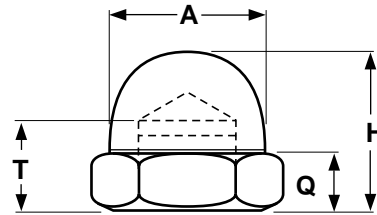
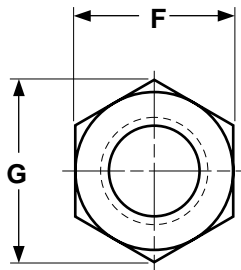


Nuts

METRIC

Domed Hex Cap Nut



METRIC - DOMED CAP (ACORN) NUTS, CLASS 6							DIN 1587
Nominal Size	Thread Pitch	F	G	H	T	Q	
		Width Across Flats	Width Across Corners	Overall Height	Drill Depth	Hexagon Height	
		Ref	Min	Ref	Ref	Ref	
M3	0.50	5.50	6.08	6	3.80	3	
M4	0.70	7	7.74	8	5.50	4	
M5	0.80	8	8.87	10	7.50	5	
M6	1	10	11.05	12	8	5	
M8	1.25	13	14.38	15	11	6.50	
M10	1.50	17	18.90	18	13	8	
M12	1.75	19	21.10	22	16	10	
M16	2	24	26.75	28	21	13	
M20	2.5	30	33.53	34	26	16	
M24	3	36	39.98	42	31	19	

Description	A one-piece hex nut, milled-from-the-bar, with a dome-shaped top (similar in shape to an acorn) and a threaded hole at the opposite end.
Applications/ Advantages	Cap nuts serve two main purposes: (1) as decorative pieces, and (2) as covers for projecting threads.
Material	Class 6 cap nuts shall be made from a low-carbon steel which conforms to the following chemical composition requirements-- <i>Carbon: 0.50% max.; Phosphorus: 0.060% max.; Sulfur: 0.150% max..</i>
Hardness	M3 - M16: Vickers HV 150 - 302 (Rockwell B 78.7 - C 30) over M16 - M24: Vickers HV 170 - 302 (Rockwell B 85 - C 30)
Plating	See Appendix-A for information about the plating of steel cap nuts.