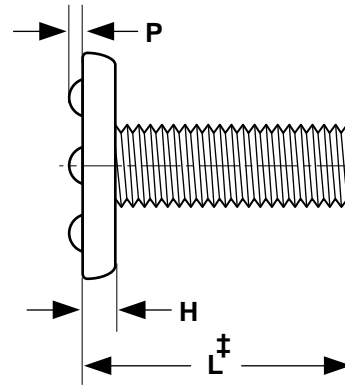
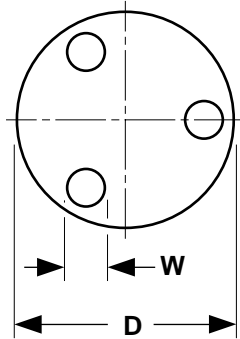


Weld Screws

Top Projection Style



‡Length of weld studs is measured from the welding surface of the head to the end of the shank, excluding the projections.

STEEL WELD SCREWS WITH TOP PROJECTIONS											Ohio Nut & Bolt*
Nominal Size or Basic Screw Diameter	Threads per Inch	D		H		P		W			
		Head Diameter		Head Height		Projection Height		Projection Width			
		Max	Min	Max	Min	Max	Min	Max	Min		
6	.138	32	.260	.240	.046	.036	.022	.018	.055	.045	
8	.164	32	.323	.303	.052	.042	.027	.023	.075	.065	
10	.190	24	.385	.365	.068	.058	.032	.028	.085	.075	
10	.190	32	.385	.365	.068	.058	.032	.028	.085	.075	
1/4	.250	20	.510	.485	.083	.073	.042	.038	.105	.095	
Tolerance on Length					Up to 1 in., Incl.: -0.03						

WELD SCREWS WITH TOP PROJECTIONS - PART NUMBER COMPARISON									
Size	Ohio Nut & Bolt Part Number	Size	Ohio Nut & Bolt Part Number	Size	Ohio Nut & Bolt Part Number	Size	Ohio Nut & Bolt Part Number	Size	Ohio Nut & Bolt Part Number
6-32 x 1/4	GW1104	8-32 x 3/8	GW1406	10-24 x 3/8	GW1506	10-32 x 3/8	GW1606	1/4-20 x 3/8	GW2106
6-32 x 3/8	GW1106	8-32 x 1/2	GW1408	10-24 x 1/2	GW1508	10-32 x 1/2	GW1608	1/4-20 x 1/2	GW2108
6-32 x 1/2	GW1108	8-32 x 5/8	GW1410	10-24 x 5/8	GW1510	10-32 x 5/8	GW1610	1/4-20 x 5/8	GW2110
6-32 x 5/8	GW1110	8-32 x 3/4	GW1412	10-24 x 3/4	GW1512	10-32 x 3/4	GW1612	1/4-20 x 3/4	GW2112
6-32 x 3/4	GW1112	8-32 x 1	GW1416	10-24 x 1	GW1516	10-32 x 1	GW1616	1/4-20 x 1	GW2116
6-32 x 1	GW1116								

Description	A fastener with unified thread pitch and a cylindrical, low profile head with flat parallel surfaces. The top of the head has three hemispheroidal-shaped weld projections equally spaced on a locating circle concentric with the shank.
Applications/ Advantages	Enables a threaded fastener to become a permanent, integral part of an assembly. The top projection style is preferred when a smooth, finished appearance on the outer surface is desired.
Material	C1008 - 1010 or equivalent welding quality carbon steel
Tensile Strength	60,000 psi., minimum
Length of Thread	Studs with nominal lengths of 2 inches or less should have threads extend to within one thread of the top of the weld projections. Studs over 2 inches should have a minimum thread length of 1.75 inches.
Finish	Weld screws are supplied with a plain, unplated finish to facilitate welding.

*Ohio Nut & Bolt is the original writer of these weld screw specifications.